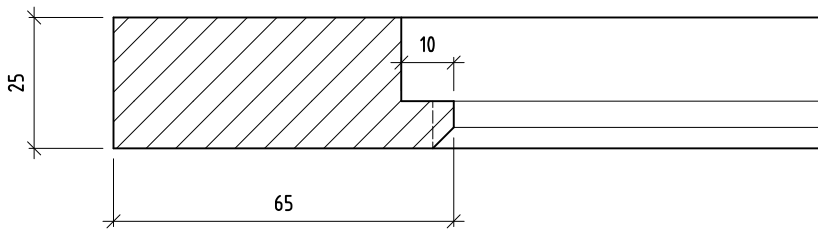
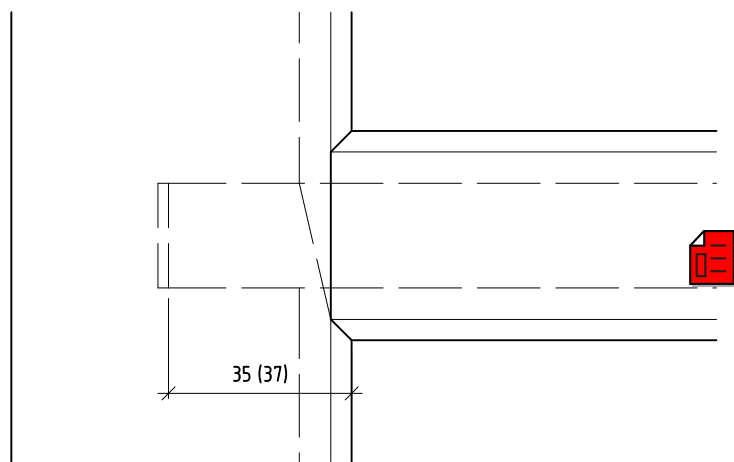
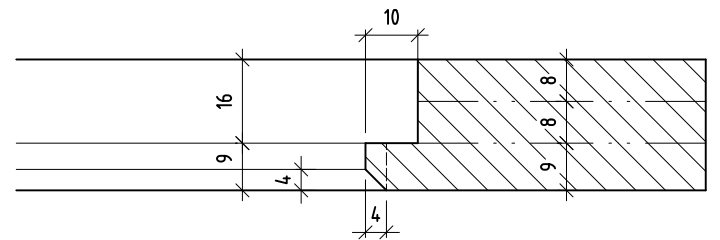


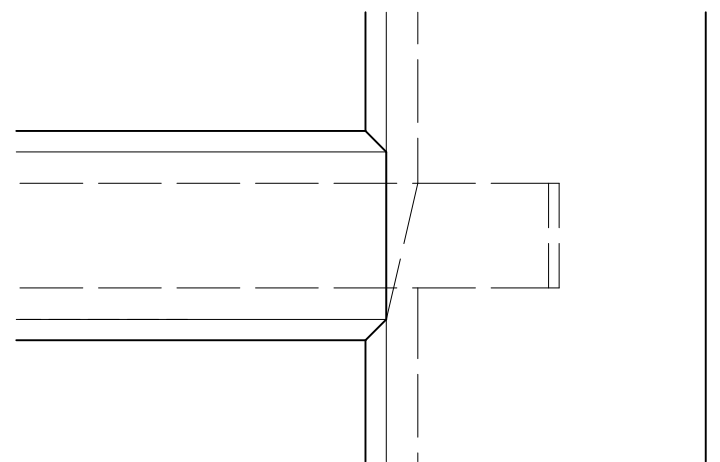
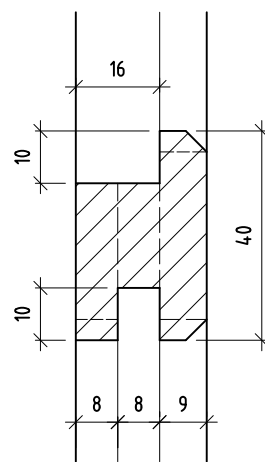
A-A



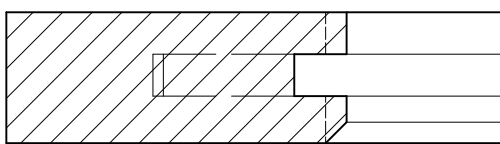
A-A



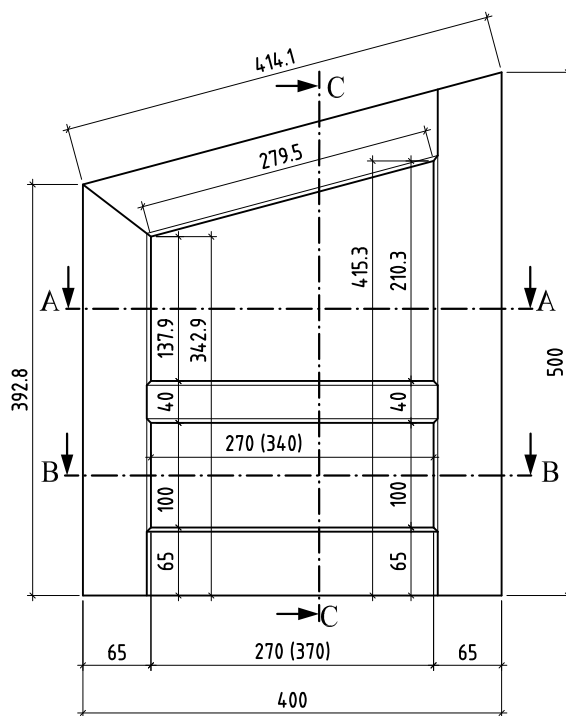
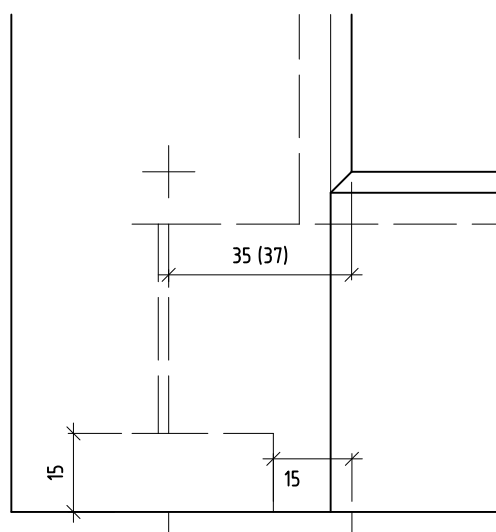
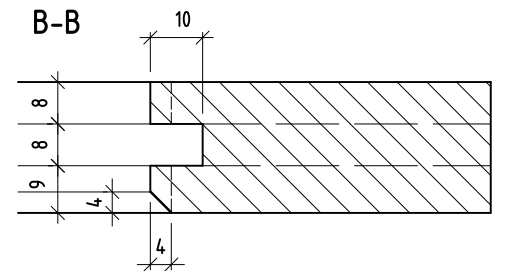
C-C



B-B



B-B



Werkstoffliste	Mat.	Stk.	Länge	Breite	Dicke
Fries aufrecht	L/N	1	392.8	65	25
Fries aufrecht	L/N	1	500	65	25
Fries waagrecht unten	L/N	1	370	65	25
Fries waagrecht oben	L/N	1	414.1	65	25
Fries waagrecht	L/N	1	340	40	25

	Reissfragment Grundlegende Berufsarbeiten (Teilprüfung) 6. Semester	Aufgaben-Nr.: 09a-P.0
	Verband Schweizerischer Schreinermeister und Möbelfabrikanten	Massstab: 1:1
		Plangröße: 420 x 594
		Datum: 26.01.2009
		Gezeichnet: ls